

GEORGIA FIGURE SKATING CLUB

JULY 2006

THE BLADE



ANNOUNCING THE PEACH OPEN AND 10TH ANNUAL PEACH CLASSIC

The Peach Events are here! The Classic is an all adult competition that offers great competition, camaraderie and a great competitor's party. In 2005, the Classic had 263 starts, and 61 events. Competitors represented 36 clubs, 8 states and came from as far away as the United Kingdom and Canada. This event has a much anticipated Interpretive portion which never comes short of spectacular. "Sucker Punch" will be back again for the Competitors' Party! Aren Nielsen and Colin VanderVeen will give it their all, along with their new bass player. The "theme" this year is "Secret Agent". The dates are September 2-3, 2006. Registrations are due July 21, 2006.

Of course the Club also recognizes its youngest members in this competition on September 1-2, 2006. The Open is "open" to competitors in the No-Test-Senior levels. Along with freestyle, compulsories and spins, showcase has made a grand entrance. This event is an extremely fun, no stress event. No axels or double jumps are permitted at any level. It's all about the way you interpret your music, your basic skating skills and the costume. You can even use music with words! Register and skate your freestyle to prepare for Regionals and then skate a fun, exciting showcase number! Entries are due July 15, 2006.

For those of you who are in the basic skills ranks, the rink will be hosting a Basic Skills competition following the club's competition on September 3, 2006. The announcement is available at www.gafsc.org in the Peach Open section. This event has proved to be enjoyable for all participants! Entries are due August 2, 2006.



Name: Courtney Wootton **Age:** 12 **Level:** Pre-Preliminary **Grade:** 7th

Current Coach: Mindy Sellers

How often do you skate: 4 days a week.

Favorite Jump: Lutz

Goals for the coming skating year: To land my axel and double salchow

Most memorable skating experience: When I first stepped on the ice at a birthday party. I knew I loved it and it was for me!

Anything else you would like us to know about you: I play the flute in the band at school. I have a great dog that has patch over her eye. My favorite place I like to go is Florida. I get to see my grandparents and they have a really great ice rink there too.

PLANNING THE



GAFSC NEEDS YOU!!! Below is a list of current chairs for the competitions. This list is only a select few. As you can see, several people are listed more than once. That is why we need adults and children as well. We know you all have special gifts and talents. Kids can help with running, awards, and even ice monitoring. Adults, we need you everywhere. Please take the time to call a chair person and offer your time and talents. If you would like to become a chair, there are several open. Don't be afraid! It is my first time as a music chair and awards chair, but next time it will be easier! It is a fun time and very rewarding.

Committee Chairs for 2006 Peach Classic/Open

Committee	Chairperson	Phone	Email
Announcements/Applications	Rob Lichtefeld	678-468-3967	rlichtefeld@yahoo.com
Music/Announcers	Kristel Fuchs	770-794-4932	kristel_fuchs@yahoo.com
Awards/Medals	Bill and Kristel Fuchs	770-794-4932	mrbillkf@hotmail.com kristel_fuchs@yahoo.com
Coaches/Volunteer Hospitality	Diane Lepori	770-840-8829	dianaderoma@aol.com
Competitors' Goody Bags	Suzan Miller??	770-921-8201	is2@mindspring.com
Dressing Rooms	OPEN		
Facilities/Set Ups	Rob Lichtefeld	770-513-2117	rlichtefeld@yahoo.com
Ice Monitors	Indra Washington	770-209-9290	indra_washington@hotmail.com
Judges Hospitality	Diane Lepori	770-840-8829	dianaderoma@aol.com
Judges Stand/Maintenance	Rob Lichtefeld	678-468-3967	rlichtefeld@yahoo.com
Media Relations/PR	OPEN		
Practice Ice	Marianne Campbell	678-309-0470	PracticeIce@gafsc.org
Programs/Advertising	Shawn Bourgeois	770-932-3735	shawndneil@hotmail.com
Registration	Amy Bryan		isk8tr@bellsouth.net
Runners	Indra Washington	770-209-9290	indra_washington@hotmail.com
Sponsorships	OPEN		
Transportation	OPEN		
Vendors	Stephanie Cole	678-644-7790	derreckc@bellsouth.net
Volunteers	OPEN		

MEMBERSHIP DRIVES ARE A HIT!



Duluth

Town Center



Membership drives at both rinks were well attended. On June 29, Town Center's drive was a huge success and a great time for the kids because Marianne Campbell headed up the on-ice games. Bucket races and other relay races were the highlight of the night. We had a parents meeting for new parents as well. Rob Lichtefeld, our fearless leader, was on hand to give information and help with questions. He was also our designated picture taker! Lori's posters were again a big hit. We have a lot of new families at Town Center who are very excited about the club and also excited about volunteering. All of us enjoyed sub sandwiches, fruit, vegetables, potato salad, chips, desserts and drinks. We ended the night with door prizes for adults and kids. Everyone had a great time! Many thanks to Marianne Campbell, Christine Wootton and Kristel Fuchs who all headed up the evening. Also, thanks to those who donated food items and helped with set up and clean up!

On June 23 during club ice, Duluth celebrated the New Year with a beach party. GaFSC members invited a friend to celebrate our New Year on ice. Junior Club members also joined us for fun. The ice time started with friends having time to share one of their favorite activities- figure skating- with each other!. Then the excitement grew when Vania Smith joined us on the ice and led the group in challenging games.

While skaters enjoyed the ice, parents and family members looked at the fantastic membership posters created by Lori Faris. Lori shared information with many new parents and skaters who were interested in learning more about the excitement and benefits of being a Georgia Figure Skater. Both parents and children enjoyed great snacks thanks to Diana Laporis great efforts. We ended our celebration with great door prizes. What fun!!

I would like to thank all the people who donated their time, efforts, food, and prizes to help make this a successful event. We are looking forward to a great year! We welcome all new members to the Georgia Figure Skating Club. I would like to offer a special welcome to all of the ex-Atlanta Figure Skaters whom we have been sharing our great ice with at the **Atlanta Ice Forum- home of the Georgia Figure Skaters**. We are glad to have all new members and returning members in the Georgia Figure Skating Club. May you all have your best year ever on ice!

Now and then it is good to pause in our pursuit of happiness
and just be happy.-- Anonymous



OUR MEMBERS HANG OUT WITH THE FAMOUS!



Above: Our Treasure, Ben Loggins and his daughter Emily with Kristie Yamaguchi.

Kimie Meissner began skating at age 6 and was originally competing in our Region!



Above: Emily Loggins poses with Kimie Meissner, America's newest sweetheart.

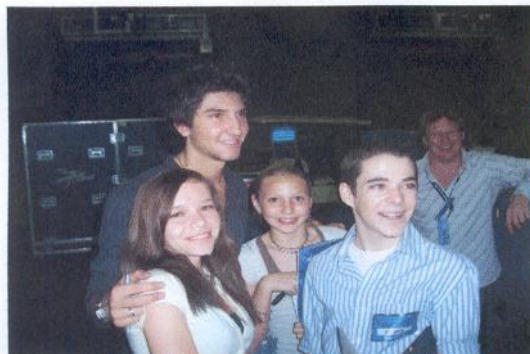


Above: Our Treasure, Ben Loggins meets Rena Inoue and John Baldwin.

Inoue & Baldwin were the first pairs couple to land a throw triple axel in competition!

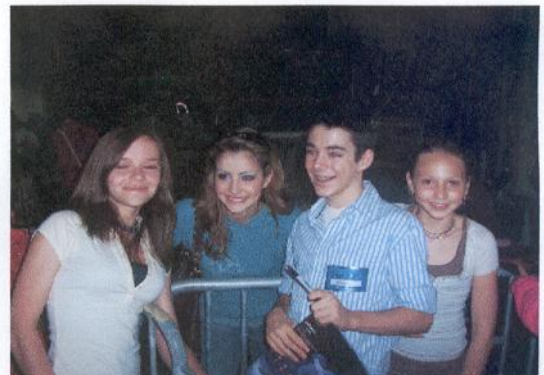


Above: Jessica Fuchs talks with Sasha Cohen.



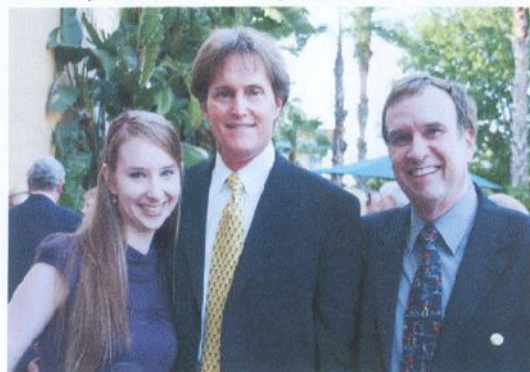
Above: Julia Bila, Jessica Fuchs and Taylor Gifaldi pose with Evan Lysacek.

Tanith Belbin received her U.S citizenship only weeks before the Olympics!



Above: Julia Bila, Tanith Belbin, Taylor Gifaldi and Jessica Fuchs smile big!

Ben and Emily Loggins pose with Olympic gold medalist, Bruce Jenner (left). Ben gets the honor of a photograph with one of the world's most know skaters, Scott Hamilton (right)



2006 Atlanta Open Results for Georgia FSC



Novice Men FS
1st/6 Alexander Zahradnicek 87.64

Novice Men SP
1st/6 Alexander Zahradnicek 45.47

Novice Ladies FS – Group B
7th/11 Amelia Bradley 33.26

Novice Ladies SP – Group A
7th/11 Amelia Bradley 21.47

Juvenile Girls FS – Final Round
5th/12 Naomi Bradley

Juvenile Girls FS – Group B
3rd/8 Naomi Bradley
6th/8 Hannah Cobb

Juvenile Girls FS – Group D
5th/8 Taylor Johnson

Juvenile Boys FS
2nd/2 Taylor Gifaldi

Open Juvenile Girls FS
2nd/7 Louisa Barama

Pre-Juvenile Girls FS – Group B
3rd/8 Nicole Miller

Preliminary Girls FS – Group D
6th/8 Ashley Hammond

Preliminary Boys FS
2nd/2 Brad Martin

Pre-Preliminary A Girls FS – Group A
7th/7 Kaysi Mitchell

Pre-Preliminary A Girls FS – Group B
2nd/7 Courtney Wootton

Pre-Preliminary A Girls FS – Group C
5th/6 Ashley Henderson

Pre-Preliminary A Girls FS – Group D
6th/7 Amy Patterson

Adult Gold FS
2nd/2 Jennifer Silas

Adult Pre-Bronze FS
3rd/5 Kristen Bartlett

Intermediate Jumps
4th/4 Nikki Thai

Intermediate Spins
7th/7 Nikki Thai

Juvenile Spins
4th/6 Hannah Cobb

Juvenile Boys Compulsory Move
2nd/2 Taylor Gifaldi

Juvenile Girls Compulsory Moves – Group B
4th/5 Hannah Cobb

Juvenile Girls Jumps
2nd/5 Hannah Cobb

Preliminary Girls Compulsory Moves – Group A
5th/8 Ashley Hammond

Preliminary Girls Compulsory Moves – Group B
2nd/5 Courtney Wootton

Preliminary Spins – Group A
4th/6 Brad Martin

Preliminary Boys Compulsory Moves
2nd/2 Brad Martin

Preliminary Boys Compulsory Jumps
2nd/2 Brad Martin

No-Test B Girls FS – Group C
4th/6 Milla Ihalainen
5th/6 Rachel Watson

No-Test Compulsory Moves – Group B
1st/7 Rachel Watson
7th/7 Milla Ihalainen

No-Test Girls Spins – Group A
4th/4 Milla Ihalainen

Attention Skaters

The first skater from each rink to correctly answer the trivia questions on page 7 will receive a prize. Email your answers to Marianne at hssoupteacher@yahoo.com.
HURRY! BE THE FIRST!

UPCOMING COMPETITIONS

PEACH OPEN & BASIC SKILLS

Duluth, Georgia
September 1-3, 2006
www.gafsc.org
deadline: July 15 (late applications
will be considered)
Basic Skills Deadline: Aug. 3

15th Annual Orange Blossom Open

At the Tampa Bay Skating Academy
Oldsmar, Florida
July 28 - 30, 2006
www.tbsc.net

Silver State Open Championship

Las Vegas, NV
August 17 - 20, 2006
http://www.lvskating.com/
deadline: July 12

Rocket City Classic & Basic Skills

Huntsville, Alabama
August 26-27, 2006
www.schsv.com
Deadline: July 15 (will accept
late applications)

PEACH CLASSIC (ADULTS)

Duluth, Georgia
September 2-3
www.gafsc.org
Deadline: July 21

2006 National Showcase

Northern Ice Skating Club
Oak Lawn, Illinois
www.northernice.org
(Must have placed 1-4 in a Showcase
or Interp. event during the past 12
months)
August 2-6, 2006

Colorado Springs Invitational

September 12-17, 2006
Colorado Springs, Colorado
mail: lisa_landon@adelphia.net
www.centennialskatingclub.org
deadline: July 31

The 2006 Dogwood Open & Basic Skills

August 18-20 2006
RALEIGH ICEPLEX
Raleigh, NC 27604
www.skatingclubnc.org
Deadline: July 15 (will accept
late applications)

For more information on upcoming competitions and events, visit www.usfigureskating.org.

"I try not to think about marks, the first place or gold medal.
most important thing is to show what you are capable
The rest will come on it's own." Evgeny Plushenko



T I D B I T S

Advertising:

Do you have something skating related to sell? You can place a classified ad in the newsletter for \$5.00, or for only \$12.00 the will run until it sells.

Would you like to advertise your business in our newsletter?

If so, please contact Marianne Campbell or Kristel Fuchs. (Our numbers are listed at www.gafsc.org)



TRIVIA:

- 1) Who received her U.S. Citizenship only weeks before the Olympics?
- 2) Who landed the first triple jump in a competition?
- 3) At what age did Kimmie Meissner start skating?
- 4) Who was the first pair to land a throw triple axel in competition?
- 5) What are the dates of the Peach Open and Peach Classic?



Your GaFSC Board of Directors

President Rob Lichtefeld

Vice-President - Duluth Cece Landress

Treasurer Ben Loggins

Vice-President - Town Ctr Christine Wootton

Secretary Marianne Campbell

Dance Test Chair Gloria Lewis

Singles and Pairs Test Chair Ginger Whatley

Membership Chair Lori Faris

Members At Large

Greg Corbitt

Kristel Fuchs

Maryann Surratt

**VOLUNTEER
TODAY**



How can we expect our children to know and experience the joy of giving unless we teach them that the greater pleasure in life lies in the art of giving rather than receiving. *James Cash Penny*

**GEORGIA FIGURE SKATING CLUB
1533 GLENCREST TRAIL
LAWRENCEVILLE, GA 30043**

MAIL TO:



**GEORGIA
FIGURE
SKATING CLUB
COME AND JOIN
IN THE FUN!!!!**

